

Attachment 6 - Email Interface For External Systems	Wersja: 4.0
ECIP_SEAP_SIP_Attachment_6_SEAP_Email_Interface_For_External_Systems.docx	Data: 2015-07-24

## MINISTRY OF FINANCE

### SYSTEM INTEGRATION PLAN

#### ATTACHMENT 6 – SEAP SPECIFICATION

#### EMAIL INTERFACE FOR EXTERNAL SYSTEMS

#### PROJECT ECIP/SEAP

**VERSION <4.0>**

1 z 15



**INNOWACYJNA  
GOSPODARKA**  
NARODOWA STRATEGIA SPÓJNOŚCI



UNIA EUROPEJSKA  
EUROPEJSKI FUNDUSZ  
ROZWOJU REGIONALNEGO



Attachment 6 - Email Interface For External Systems	Wersja: 4.0
ECIP_SEAP_SIP_Attachment_6_SEAP_Email_Interface_For_External_Systems.docx	Data: 2015-07-24

## Table of Contents

<b>1.</b>	<b>Email Interface for External Systems .....</b>	<b>3</b>
1.1.	Objective of the document.....	3
1.2.	Use of the document.....	3
1.3.	Contents of the document .....	3
1.4.	References and supporting documents .....	3
1.5.	Abbreviations and terms .....	4
1.6.	Specification limits .....	4
<b>2.</b>	<b>Email channel.....</b>	<b>5</b>
2.1.	Mail box .....	5
2.2.	Attachments - file types .....	5
2.3.	Parameters for email message attachments.....	6
2.4.	RFC standards .....	6
2.5.	Validation of email messages .....	6
2.6.	Sending email message .....	8
<b>3.</b>	<b>Document Workflow – Messages .....</b>	<b>9</b>
<b>4.</b>	<b>Document Workflow – Messages – Additional XML Elements.....</b>	<b>12</b>

Attachment 6 - Email Interface For External Systems	Wersja: 4.0
ECIP_SEAP_SIP_Attachment_6_SEAP_Email_Interface_For_External_Systems.docx	Data: 2015-07-24

# 1. Email Interface for External Systems

## 1.1. Objective of the document

The purpose of this specification is the description of the email channel and electronic documents (also called here as messages) sent and received by the SEAP system during communication with external systems through this channel.

## 1.2. Use of the document

The document can be used as an input to the design and implementation as well as during creation of test documentation or using of the System.

The target audience of this document is an analytical and designing team of Polish Customs Administration and teams (analysts, designers, developers, testers, etc.) of the Contractor or the 3<sup>rd</sup> party companies involved in the creation of software for customs services operators.

## 1.3. Contents of the document

The document includes a description of the email channel as well as describes how to send electronic documents to the SEAP system and how electronic documents are sent from the System SEAP to external systems.

## 1.4. References and supporting documents

- System Integration Plan (only in Polish)

Attachment 6 - Email Interface For External Systems	Wersja: 4.0
ECIP_SEAP_SIP_Attachment_6_SEAP_Email_Interface_For_External_Systems.docx	Data: 2015-07-24

## 1.5. Abbreviations and terms

Termin	Definicja
XML	Extensible Markup Language.
XSD	XML Schema.
WSDL	Web Services Description Language.
SOAP	Simple Object Access Protocol.
SEAP	Single Entry Access Point (pl. <i>PUESC</i> ).
PUESC	SEAP (pl. <i>Portal Usług Elektronicznych Służby Celnej</i> ).
ELE	External Legal Entity - company, agency, person understood as actor of Polish Customs System.
CRKiD	Central Repository (pl. <i>Centralne Repozytorium Komunikatów i Dokumentów</i> ).

## 1.6. Specification limits

Specification describes how email channel operates. It does not define the structures of customs services messages such as IE515, AKC-N, etc. It defines the way of transmission of messages between the SEAP System and ELEs (external systems).

Attachment 6 - Email Interface For External Systems	Wersja: 4.0
ECIP_SEAP_SIP_Attachment_6_SEAP_Email_Interface_For_External_Systems.docx	Data: 2015-07-24

## 2. Email channel

One of the channels of communication with ELEs is the email channel. It is a non-visual communication channel arranged to receive and send electronic documents in the form of an email message.

### 2.1. Mail box

In order to enable the transmission of electronic documents to the SEAP system and sending electronic documents from the SEAP system in the form of email message there has been created and made available an email box (specifically dedicated for this purpose).

The mail box name: **puesc@mf.gov.pl** (production environment)

The name of test mail box is: **test.puesc@mf.gov.pl** (test environment)

### 2.2. Attachments - file types

The SEAP system supports two types of files that can be transferred by ELEs (external systems) as attachments to email messages. These types are:

1. **XML** – XML document attached to the email message,
2. **ZIP** – zipped file attached to the email message (archive containing XML documents).

#### NOTE.

XML documents have to be located directly in the ZIP file (archive) and they cannot be located in additional directory.

The SEAP system supports *XML* messages encoded in *UTF-8*.

Attachment 6 - Email Interface For External Systems	Wersja: 4.0
ECIP_SEAP_SIP_Attachment_6_SEAP_Email_Interface_For_External_Systems.docx	Data: 2015-07-24

## 2.3. Parameters for email message attachments

Due to the nature of communication through email channel in the SEAP system there are defined the following restrictions for email attachments:

- the maximum number of *XML* documents attached to email message are 10 files,
- to email message can be attached only one *ZIP* file (archive), which may contains up to 10 *XML* documents,
- the maximum size of the *XML* document is 10 MB,
- the maximum total size of all files attached to the email message is 20 MB.

### NOTE.

To email messages cannot be simultaneously attached files (attachments) of both types *XML* and *ZIP* – it can be attached either *XML* documents or *ZIP* file (archive).

## 2.4. RFC standards

The system supports email messages compliant with *RFC822* standard.

Attachments supported in the system must be compliant with *RFC1524* standard.

## 2.5. Validation of email messages

The system validates email messages in accordance with the following rules.

### 1. Validation of the email address of the sender

The system is processing only those emails, which are sent by users registered in the SEAP system. Therefore, the SEAP system checks to see whether there is a user (who has the appropriate account in the SEAP system) with email address corresponding to the email address of the sender.

Attachment 6 - Email Interface For External Systems	Wersja: 4.0
ECIP_SEAP_SIP_Attachment_6_SEAP_Email_Interface_For_External_Systems.docx	Data: 2015-07-24

## 2. Validation of parameters of the email message

The SEAP system verifies email message subject, attachment filename and filenames in the attachment (in case when the attachment is a *ZIP* file). Verification of these parameters of the email message is done by checking their compliance with specific rules – defined regular expressions. Currently defined regular expressions are:

- **format of email message subject: ‘.\*’**
  - currently defined regular expression accepts any text,
  - the system ignores email messages without a subject,
- **format of attachment filename: ‘.\*’**
  - currently defined regular expression accepts any text,
- **format of filenames in the attachment (in case of a *ZIP* file): ‘.\*’**
  - currently defined regular expression accepts any text.

### NOTE.

In case when any of the above conditions is not fulfilled email message will not be processed.

## 3. Checking compliance of email message attachment with XSD schema

During processing email messages the SEAP system verifies compliance of *XML* document (attached to the email message) with an *XSD* schema. *XML* messages must be consistent with the patterns of the target systems.

Attachment 6 - Email Interface For External Systems	Wersja: 4.0
ECIP_SEAP_SIP_Attachment_6_SEAP_Email_Interface_For_External_Systems.docx	Data: 2015-07-24

## 2.6. Sending email message

Email messages sent by the SEAP system are sent from the same email box ***puesc@mf.gov.pl*** and as the name of the email sender is set name ***PUESC***.

When using a test environment of the SEAP system email messages are sent from the email box ***test.puesc@mf.gov.pl***.

Email messages are sent by the SEAP system in *HTML* format, encoded in *UTF-8*.

If the email channel is set to compress email messages than attachment is compressed and sent in *ZIP* format.

### NOTE.

Currently, email channel is set to not send an attachment in the form of a compressed *ZIP* file.



Attachment 6 - Email Interface For External Systems	Wersja: 4.0
ECIP_SEAP_SIP_Attachment_6_SEAP_Email_Interface_For_External_Systems.docx	Data: 2015-07-24

### 3. Document Workflow – Messages

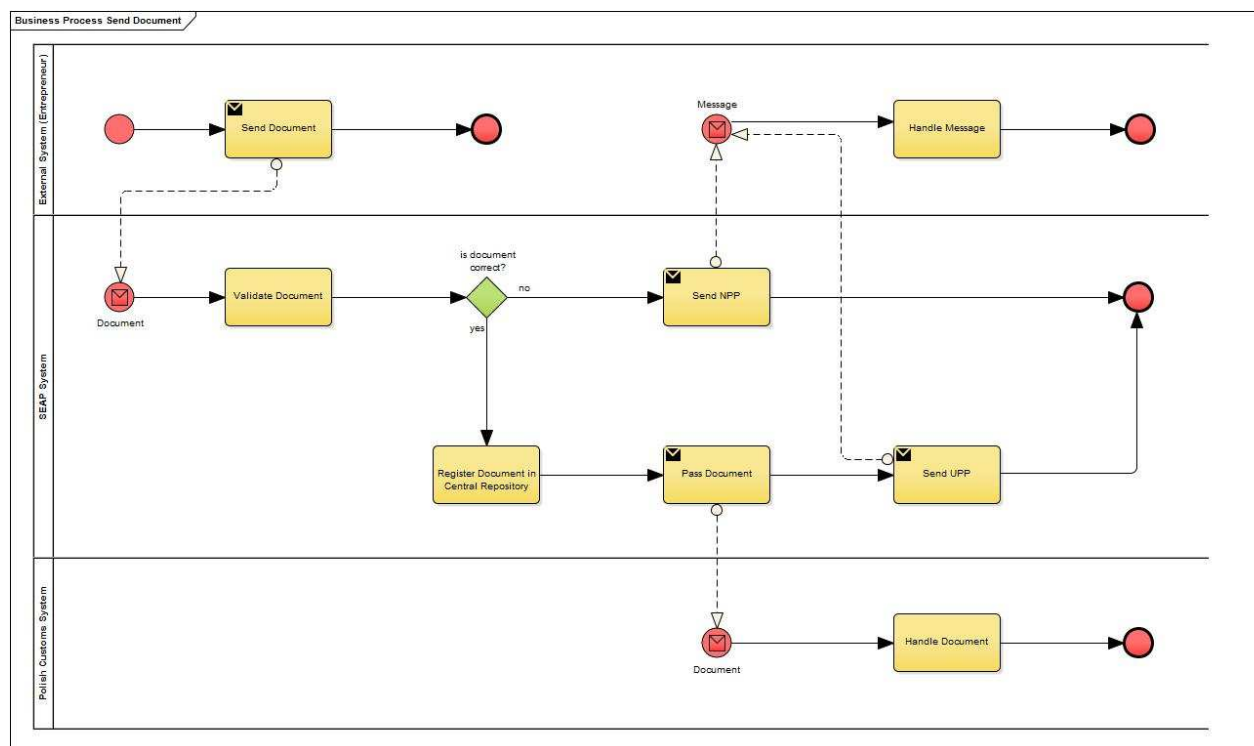
SEAP system sends the messages about the status of receipt or delivery documents during communication between the External System (Entrepreneur) and particular Polish Customs System. These messages are:

1. **UPD – Official Confirmation of Document Delivery** – this message is sent by the SEAP system to the External System (Entrepreneur) as a confirmation of service; the message must be signed by the ELE (using qualified signature or the qualified signature of the Polish Customs) and sent back to the SEAP System,
2. **PND – Confirmation of Undelivered Document** – this message is sent by the SEAP system to the particular Polish Customs System as a confirmation of non-delivery of the document to the ELE; the message is sent in a situation when the ELE did not return signed UPD message to the SEAP system within 14 days of service,
3. **UPP – Official Confirmation of Document Submission** – this message is sent by the SEAP system to the External System (Entrepreneur) as a confirmation of the document submission; optionally the message can also be sent to the particular Polish Customs System,
4. **NPP – Confirmation of Document Submission Failure** – this message is sent by the SEAP system to the External System (Entrepreneur) or to the particular Polish Customs System as a statement of failure during document submission; the message is sent in a situation where the document was sent to the SEAP system but during validation document was considered not valid (incompatible with the appropriate XSD schema or unsigned when it is required).

Flows of messages between systems are shown on diagrams below.

Attachment 6 - Email Interface For External Systems	Wersja: 4.0
ECIP_SEAP_SIP_Attachment_6_SEAP_Email_Interface_For_External_Systems.docx	Data: 2015-07-24

### 1. Sending Document: External System (Entrepreneur) – Polish Customs System (particular)

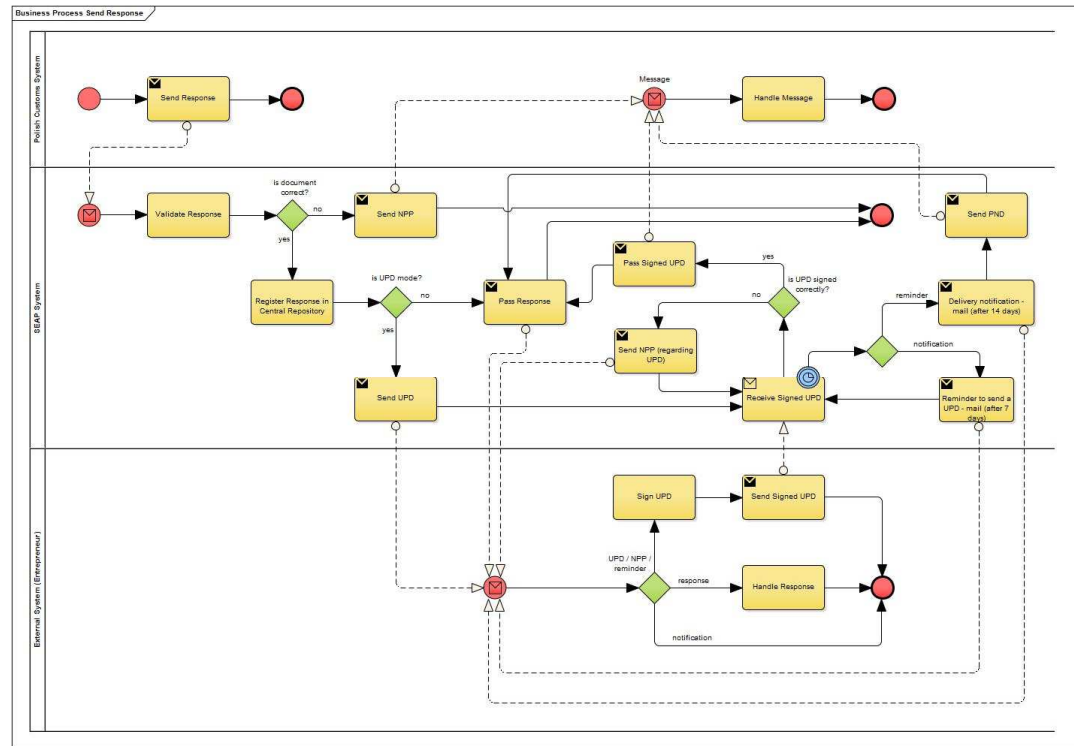


10 z 15



Attachment 6 - Email Interface For External Systems	Wersja: 4.0
ECIP_SEAP_SIP_Attachment_6_SEAP_Email_Interface_For_External_Systems.docx	Data: 2015-07-24

## 2. Sending Response: Polish Customs System (particular) – External System (Entrepreneur)



11 z 15

Attachment 6 - Email Interface For External Systems	Wersja: 4.0
ECIP_SEAP_SIP_Attachment_6_SEAP_Email_Interface_For_External_Systems.docx	Data: 2015-07-24

## 4. Document Workflow – Messages – Additional XML Elements

The structure of the messages about the status of receipt or delivery of documents must be valid against proper XSD schema (filename *schematUPO.xsd*). The XSD schema defines the basic elements necessary for exchanging information between systems. The XSD schema provides the ability to support passing of additional data (XML elements) by the SEAP system.

To transfer the additional data there is used an XML element *<InformacjaUzupelniajaca>*, along with the attribute *TypInformacjiUzupelniajacej*.

Below there are descriptions of additional data for each message.

### UPD message.

All the data is placed in the element *<UPD>*.

Additional data in the XML message (the name for *typInformacjiUzupelniajacej* attribute and the value):

- name = "*typPowiadomienia*" (Confirmation Type), the value is "*Urzędowe Poświadczenie Doręczenia*" (Official Confirmation of Document Delivery)
- name = "*skrotDokumentu*" (Document Hash), the value is an SHA1 hash for the document
- name = "*idDokumentuSEAP*" (SEAP System Document ID), the value is an internal identifier of the document in the SEAP system
- name = "*idDokumentuSystemZewnetrzny*" (External System Document ID), the value is an internal identifier of the document in the external system
- name = "*idSprawySystemZewnetrzny*" (External System Case ID), the value is an internal identifier of the case in the external system
- name = "*idWysylkiDokumentu*" (Document Shipping ID), the value is an internal identifier of shipping for the document in the SEAP system

Attachment 6 - Email Interface For External Systems	Wersja: 4.0
ECIP_SEAP_SIP_Attachment_6_SEAP_Email_Interface_For_External_Systems.docx	Data: 2015-07-24

### Example:

```
<pos:UPD>
  <pos:InformacjaUzupelniajaca typInformacjiUzupelniajacej="typPowiadomienia">
    Urzędowe Poświadczenie Doręczenia
  </pos:InformacjaUzupelniajaca>
</pos:UPD>
```

### PND message.

All the data is placed in the element *<UPD>*.

Additional data in the XML message (the name for *typInformacjiUzupelniajacej* attribute and the value):

- name = "*typPowiadomienia*" (Confirmation Type), the value is "*Poświadczenie Nedoręczenia Dokumentu*" (Confirmation of Undelivered Document)
- name = "*skrotDokumentu*" (Document Hash), the value is an SHA1 hash for the document
- name = "*idDokumentuSEAP*" (SEAP System Document ID), the value is an internal identifier of the document in the SEAP system
- name = "*idDokumentuSystemZewnetrzny*" (External System Document ID), the value is an internal identifier of the document in the external system
- name = "*idSprawySystemZewnetrzny*" (External System Case ID), the value is an internal identifier of the case in the external system
- name = "*idWysylkiDokumentu*" (Document Shipping ID), the value is an internal identifier of shipping for the document in the SEAP system

### Example:

```
<pos:UPD>
  <pos:InformacjaUzupelniajaca typInformacjiUzupelniajacej="typPowiadomienia">
    Poświadczenie Nedoręczenia Dokumentu
  </pos:InformacjaUzupelniajaca>
</pos:UPD>
```

Attachment 6 - Email Interface For External Systems	Wersja: 4.0
ECIP_SEAP_SIP_Attachment_6_SEAP_Email_Interface_For_External_Systems.docx	Data: 2015-07-24

### UPP message.

All the data is placed in the element `<UPP>`.

Additional data in the XML message (the name for *typInformacjiUzupelniajacej* attribute and the value):

- name = "*typPowiadomienia*" (Confirmation Type), the value is "*Urzędowe Poświadczenie Przedłożenia*" (Official Confirmation of Document Submission)
- name = "*skrotDokumentu*" (Document Hash), the value is an SHA1 hash for the document
- name = "*idDokumentuSEAP*" (SEAP System Document ID), the value is an internal identifier of the document in the SEAP system
- name = "*idDokumentuSystemZewnetrzny*" (External System Document ID), the value is an internal identifier of the document in the external system
- name = "*idSprawySystemZewnetrzny*" (External System Case ID), the value is an internal identifier of the case in the external system
- name = "*idWplywuDokumentu*" (Document Submitting ID), the value is an internal identifier of submitting for the document in the SEAP system

### Example:

```
<pos:UPP>  
  <pos:InformacjaUzupelniajaca typInformacjiUzupelniajacej="typPowiadomienia">  
    Urzędowe Poświadczenie Przedłożenia  
  </pos:InformacjaUzupelniajaca>  
</pos:UPP>
```

### NPP message.

All the data is placed in the element `<UPP>`.

Additional data in the XML message (the name for *typInformacjiUzupelniajacej* attribute and the value):

14 z 15

Attachment 6 - Email Interface For External Systems	Wersja: 4.0
ECIP_SEAP_SIP_Attachment_6_SEAP_Email_Interface_For_External_Systems.docx	Data: 2015-07-24

- name = "typPowiadomienia" (Confirmation Type), the value is "Poświadczenie Nieprzedłożenia Dokumentu" (Confirmation of Document Submission Failure)
- name = "skrotDokumentu" (Document Hash), the value is an SHA1 hash for the document
- name = "idDokumentuSEAP" (SEAP System Document ID), the value is an internal identifier of the document in the SEAP system
- name = "idDokumentuSystemZewnetrzny" (External System Document ID), the value is an internal identifier of the document in the external system
- name = "idSprawySystemZewnetrzny" (External System Case ID), the value is an internal identifier of the case in the external system
- Name = "PrzyczynaBledu" (Error Reason), the value is the description of the cause of an error that occurred during validation of the document

#### Example:

```
<pos:UPP>  
  <pos:InformacjaUzupelniajaca typInformacjiUzupelniajacej="typPowiadomienia">  
    Poświadczenie Nieprzedłożenia Dokumentu  
  </pos:InformacjaUzupelniajaca>  
</pos:UPP>
```

By using of additional data you can specify the exact type of notification message or link a document to the message which it refers to (for example: by using a document hash).